

Median openings through this area to be coordinated with development/redevelopment and existing access criteria. Current US14 Bypass access criteria identifies potential for full access at 1/2-mile increments and partial access at the 1/4-mile point between full access intersections. U-turns accommodated at Medary Avenue and Western Avenue.

Potential Signalized Intersection when Warranted



See culvert sections for widening options.

See bridge sections for widening options.

See bridge sections for widening options.

Scale in Feet
0 100 200

Legend

- Proposed Roadway
- Bridge/Box Culvert
- Existing ROW / Property Line
- ROW Acquisition
- Intersection Control
- Access Management
- X Access Closure
- Shared Use Path

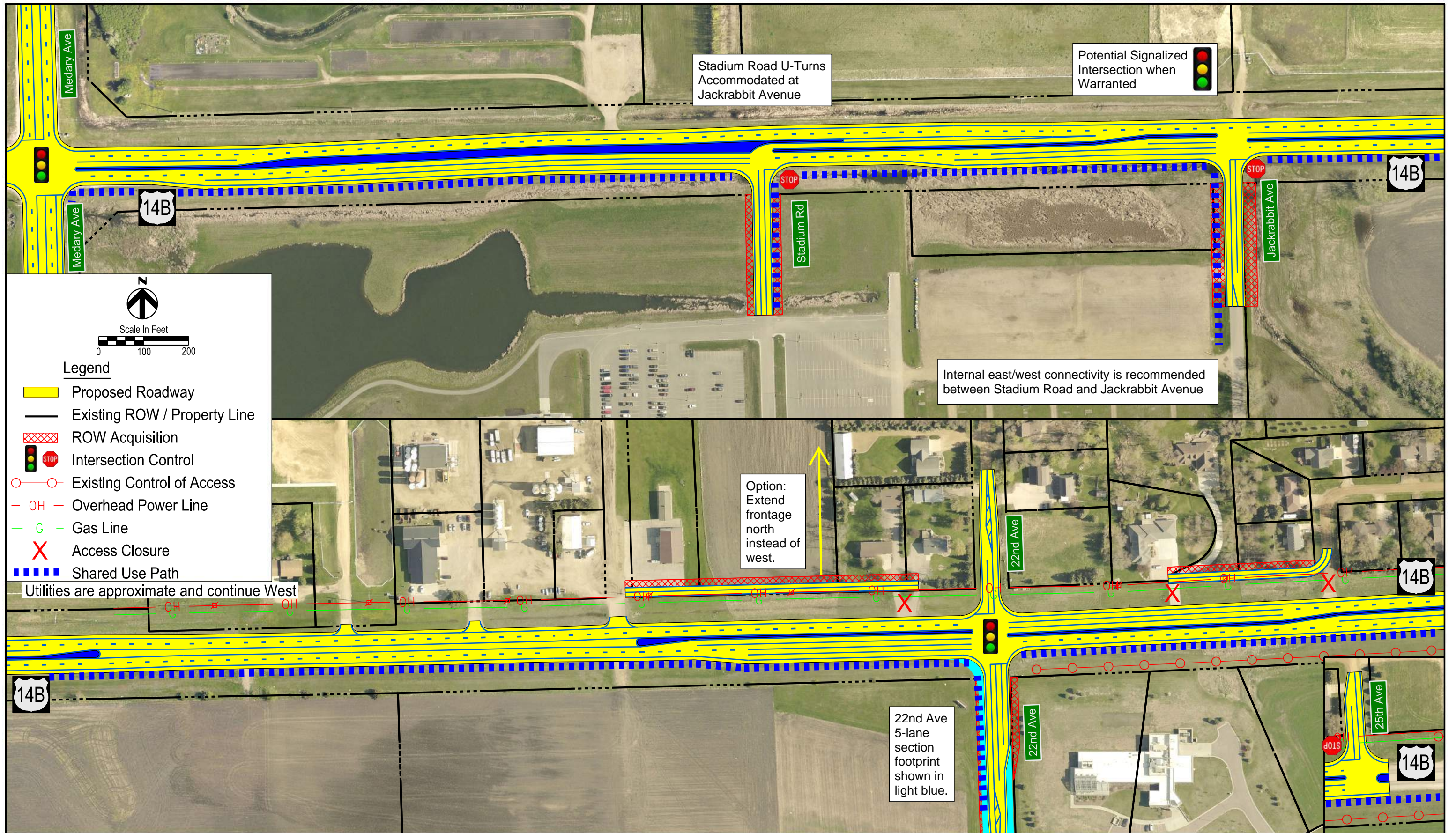


Figure 33



US14 Bypass - US14 (West) to I-29 Scenarios
 Multilane Hybrid (4-Lane Divided and 5-Lane) with Intersection Improvements
 US14 / US14B Corridor Study

Brookings, SD

Scenario
 US14 Bypass - US14 (West) to I-29
 Scenario B